

## 6 - Army Post Offices

Some Army Post Offices had tax marks for underpaid mail

APOs operated with Sterling currency

Mail carried by British army channels and not subject to UPU regulations

### May 1937 Tax Mark of British Army Post Office in China

#### In China Field Post Office No. 1:

1 June 1927 to Feb 1940 FPO 1 was at Tientsin

Postage rates: Letters 1½d 1<sup>st</sup> oz plus 1d each additional oz

Printed papers ½d per 2 oz

24 May 1937 mailed at Field Post Office No. 1

Manuscript '5' at top left for 5 rates

1d short on 5 x printed paper rate of 2½d for up to 10 oz



Type H-4-2d  
Used 1935-37

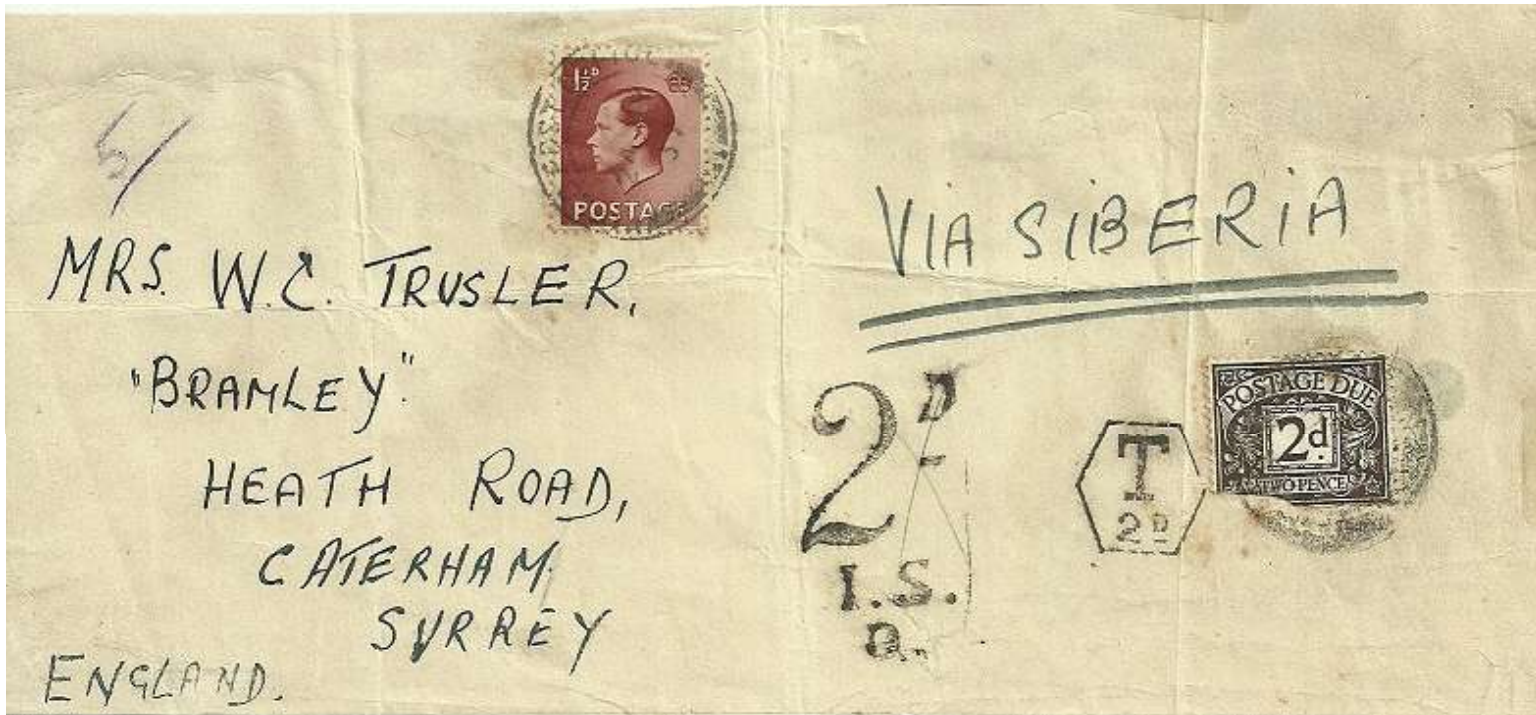
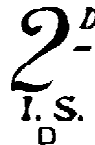
Two known

Army Post Offices  
FPO 1 Tientsin China  
Date range 1935 - 1937



#### In London Inland Section:

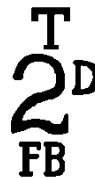
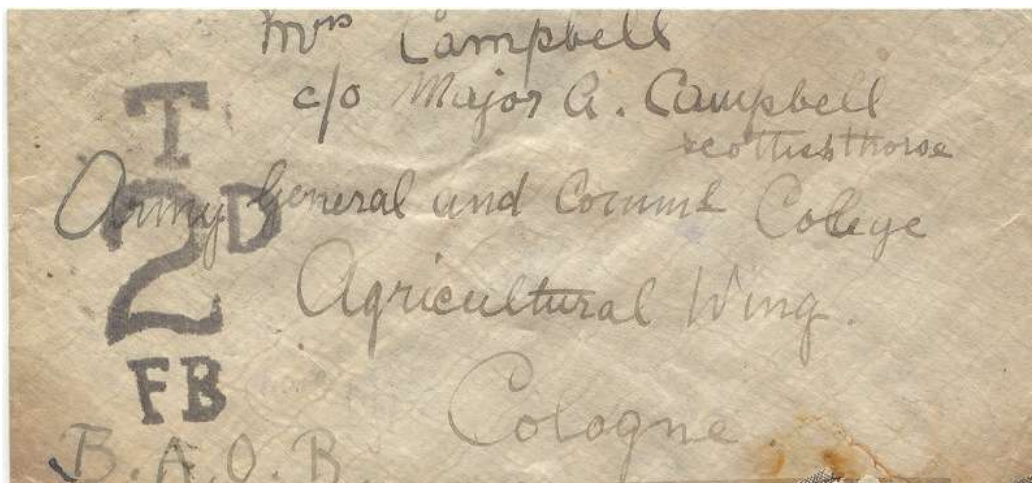
2d due mark applied



### In London Foreign Branch to British Army of the Rhine (BAOR)

2 Apr 1919 British force occupying Germany renamed BAOR centred on Cologne

Jan 1926 moved to Wiesbaden



Type FB-1-2d

Two known

Both to BAOR in 1920s



IDSTEIN I. T.

**2 Aug 1927 in Idstein near Wiesbaden:**

APO S40/H Idstein  
Apr 1926 - Oct 27



Type H-9  
Used 1927  
One known

Carried by the British Army postal system from the  
BAOR to the UK  
Taxe marks probably applied at  
Base Army Post Office (BAPO) S40  
BAPO S40 was at Wiesbaden Jan 1926 to Dec 1929

Army Post Offices  
**British Army of the Rhine**  
Date range 1927- 1929



**11 Apr 1929 in Wiesbaden:**  
Postcard of Wiesbaden  
APO S40 A was at  
GHQ Troops Wiesbaden  
Feb 1926 - July 1929



Type O-3  
Used 1929  
Two known

**In London Foreign Branch (both):**  
1/2d short on 1 1/2d Empire postcard rate  
2 x deficiency = 1d postage due

