

NORTH BORNEO - STRAITS SETTLEMENTS

North Borneo via Singapore

March 1909

Underpaid PPC (*Jesselton*) from Jesselton, North Borneo to Vienna, Austria postmarked 1 MAR 09 on a pair of the 1 cent of 1901 on the picture side. The rate for a postcard was 4 cents and the deficiency 2 cents as the item was not accepted as printed matter as endorsed.

There is also a Sandakan "T" (Tax) mark beside a manuscript "1/5" to denote first weight step and double the deficiency in French centimes. There is also a transit mark of Singapore of MR 15 1909. On arrival in Vienna it was received a blue manuscript "10" and a 10 heller postage due stamp of 1909.



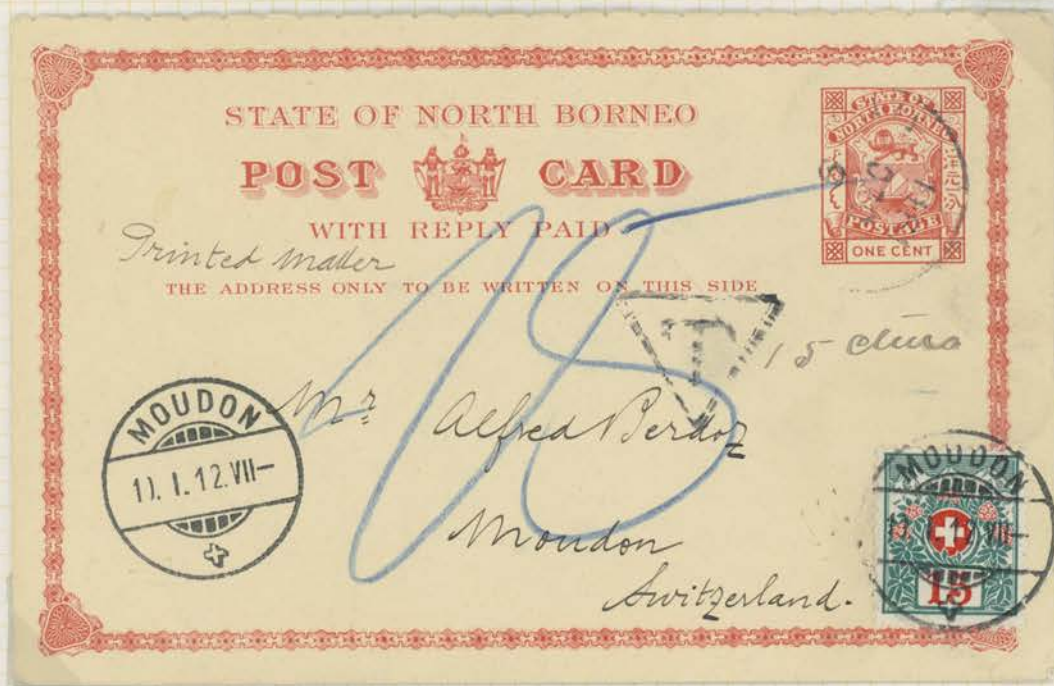
NORTH BORNEO

North Borneo

December 1911/ January 1912

Underpaid reply paid PSC (internal rate of 1 cent) of 1894 from Sandarkan, North Borneo to Moudon, Switzerland postmarked 6 DEC 1911. The rate was 4 cents and the deficiency 3 cents.

There is a Sandarkan "T" (Taxe) mark in an inverted triangle and a manuscript "15 ctms" to denote double the deficiency in French centimes. There is a large blue manuscript "15" and a Moudon arrival mark of 10.1.12 on a copy of a 1910 Swiss 15 centimes postage due stamp.



NORTH BORNEO - STRAITS SETTLEMENTS

North Borneo via Singapore

February/ April 1912

Underpaid PPC (Jesselton railway station) from Kudat, North Borneo to Wilhelmshaven, Germany postmarked 24/27 FEB 1912 on copies of the 1 cent and 2 cents of 1909. The rate was 4 cents and the deficiency 1 cent.

There is a Kudat "T" (Taxe) mark in an inverted triangle as well a blue manuscript mark of "1/5" to indicate first weight step and double the deficiency in French centimes. There are Jesselton and Singapore transit marks of 28 FEB 1912 and 11 MR 1912. The boxed "Porto" seems to have been applied in Germany with a large blue manuscript "5" indicating 5 pfennig postage due was charged.



NORTH BORNEO

July 1917

North Borneo

Overweight letter from Jesselton, North Borneo to Minneapolis, USA postmarked 26 July 1917 on a copy of the 10 cents of 1909. There is then also a blue manuscript "2/50" to indicate second weight step and postage due of 50 French centimes next to a "T" (taxe) mark in an inverted triangle. There is also a Singapore transit mark of 6 August 1917. In arrival in the US a transit mark of Penn Term in New York for 10 cents postage due was applied in October 1917.



2/50

T

JESSELTON
26
JUL
1917

10 CENTS OF 1909
UNITED STATES POSTAGE

To The American Farmers School of
Correspondence,
Minneapolis,
Minnesota
U.S. America

NEW YORK, PENN. TERM
08 AUG 1917

SINGAPORE
1130AM
6 AUG 1917

NORTHBORNEO

North Borneo

May/June 1919

Underpaid letter from Sandakan, North Borneo to Chicago, USA postmarked 20 May 1919 on a copy of the 6 cents of 1909. The rate was 10 cents and the deficiency was 4 cents.

There is a Sandakan postage due "T" (Taxe) mark in an inverted triangle together with a manuscript "1/20" to indicate double the deficiency in French centimes. On arrival in the US a "T/ collect/ 4 cents" mark was applied. The addressee applied a receiving mark of 28 June 1919.



NORTH BORNEO

North Borneo

November 1919

Underpaid local one cent reply paid postcard from Kudat, North Borneo to New York, USA partly uprated by a one cent of 1894 postmarked 3 November 1919. The rate was 3 cents and the deficiency one cent. There is a Kudat "T" (Taxe) mark in a triangle. On the reverse there are transit marks of Sandakan of 13 November 1919 and Hong Kong of 22 November 1919. There is also a binocular mark "New York N.Y/ GPO" "Due/ 2/ cents" but no arrival mark.



NORTH BORNEO

North Borneo

November 1927

Underpaid 2nd weight step letter from Sandakan, North Borneo to London, England partly paid by a copy of the 6 cents of 1925 postmarked 7 NOV 1927. The rate was 12 cents and the deficiency 6 cents. There is also a blue manuscript "T 40" (Taxe) mark indicating double the deficiency in gold centimes. On arrival in London a 2d postage due stamp was applied and cancelled in blue.



NORTH BORNEO

North Borneo

December 1928

Underpaid letter from Sandakan, North Borneo to New York, USA partly paid by a copy of the 6 cents of 1925 postmarked 31 December 1928. The rate was 12 cents and the deficiency was 6 cents. There is also a Sandakan "T" (Taxe) mark in an inverted triangle. On the reverse there is a transit mark of 8 January 1929 of Hong Kong. There is a "Postage due 8 cents, Seattle Wash." mark with amount changed to the correct 5 cents transit mark applied on first arrival in the US.



NORTH BORNEO

North Borneo

November 1932

Underpaid envelope from Jesselton, North Borneo postmarked 22 NOV 1932 to London, England partly paid by a vertical strip of five of the 4 cents of 1926 to total 20 cents. At a rate of 8 cents for the first ounce and 4 cents for each extra ounce this would pay for a letter of 4 ounces.

There is no Borneo or transit (tax) mark to indicate the deficiency but there is a London "4d/ W.C." mark applied on arrival. This seems to indicate a letter weighing 6 ounces, a rate of 28 cents, a deficiency of 8 cents doubled to 16 cents and converted to 4d. No postage due appears to have been charged.



ELLISDONS

DEPARTMENT 76,

245-246

HIGH HOLBORN,

LONDON W.C.1

