

# MALAYA - STRAITS SETTLEMENTS - SELANGOR

Selangor via Penang

May/June 1909

Unpaid letter from Kondanoor, India to Kuala Lumpur, Selangor, Malaya postmarked 30 MY 09 on the reverse. The rate, and the deficiency, was 1 Anna.  
On the obverse are Indian marks "T" (Taxe) in a circle and semi circular "Kondanoor/ Due/ ... As".  
On the reverse there is a Penang transit mark of JU 10 1909 and a Penang postage due mark "8" [cents] indicating that postage due of 8 cents was chargeable.  
Finally there is a Kuala Lumpur arrival marking of 11 JU 1909.



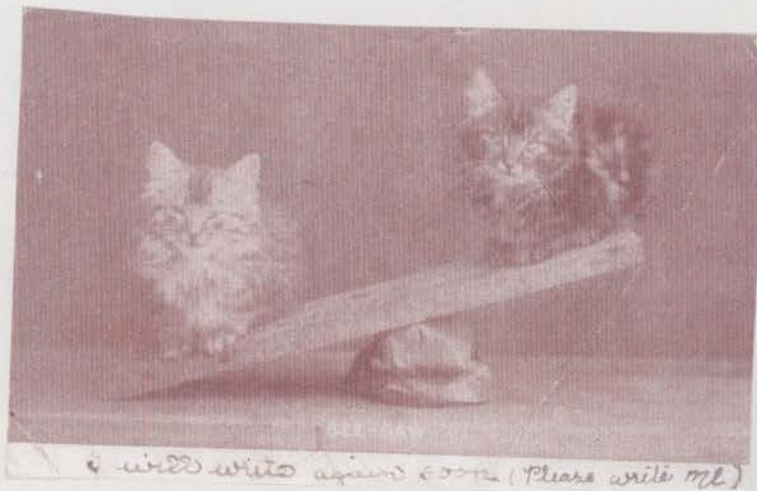
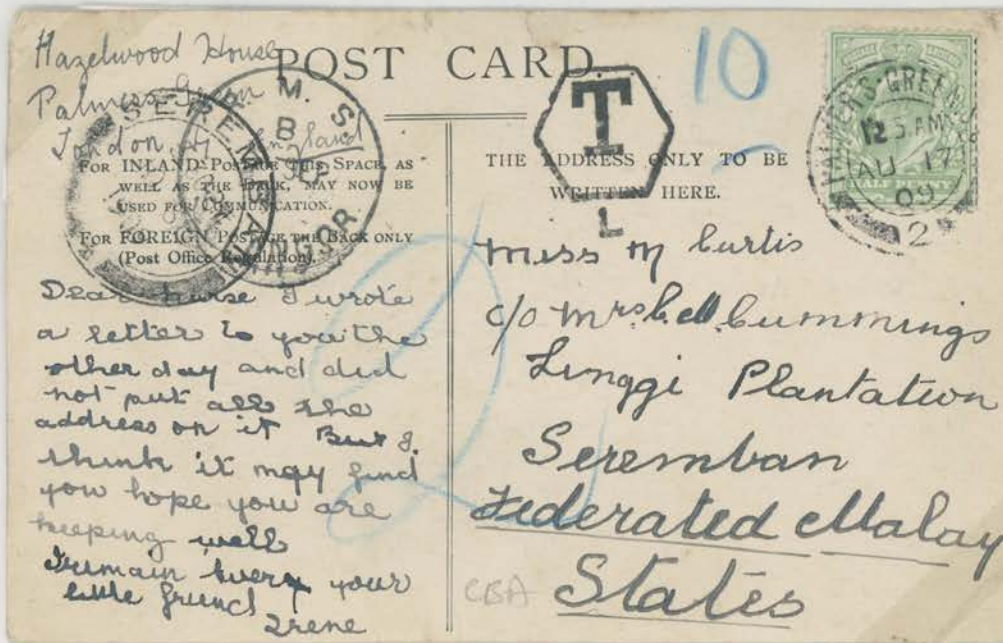
# MALAYA - FEDERATED MALAY STATES

Negri Sembilan

August 1909

Underpaid PPC (Cats) from Palmer's Green, London, England to Seremban, Negri Sembilan, Malaya postmarked 17 August 1909 partly paid with a 1/2d of 1904. The rate was 1d and the deficiency was 1/2d.

There is also a London "T/L" (Tax) mark in a pentagon as well as a blue manuscript "10c" in blue to denote double the deficiency in French centimes. In Malaya there is a transit mark of the TPO "RMS/Selangor" of 9 September 1909 and an arrival mark of Seremban of 10 September 1909. Postage due is denoted by a large blue manuscript "2" being the amount in cents collected.



# MALAYA - STRAITS SETTLEMENTS

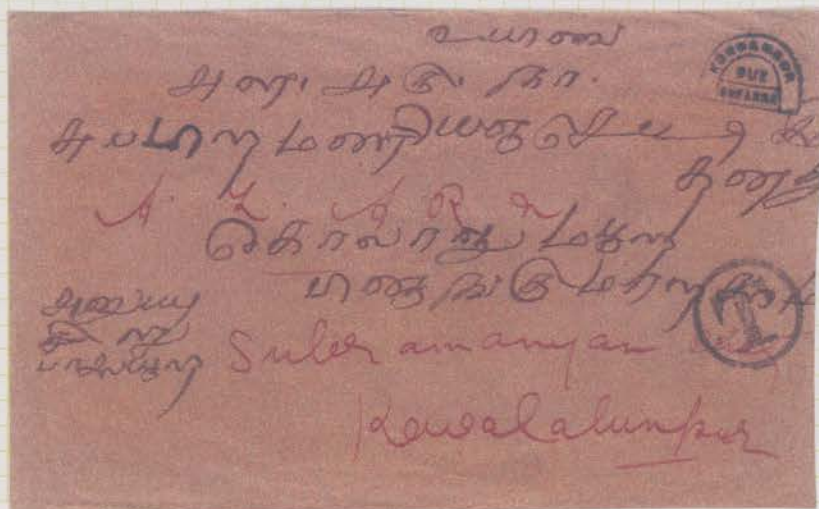
## Penang to Selangor

September/October 1909

Unpaid letter from Kondangor, India to Kuala Lumpur, Selangor, Malaya postmarked 14 SE 09.

The rate and the deficiency was 1 Anna.

There is an Indian "T" (Taxe) mark in a circle as well as a "Kondangor/ Due/ One Anna" semi-circular mark which was for domestic use. In transit in Penang it received a transit mark of OC 1 1909 as well as an "8" mark to denote the postage due. The Kuala Lumpur arrival mark is 2 OC 1909.



# MALAYA - STRAITS SETTLEMENTS - SELANGOR

Selangor via Penang

February 1910

Underpaid letter from India to Kuala Lumpur, Selangor, Malaya partly paid with a copy of the ½ Anna of 1906 on the reverse. The correct rate was one Anna and the deficiency ½ Anna. On the obverse is an Indian "T" (Tax) marking in a circle. On the reverse there is a Penang transit mark of FE 12 1910. Also on the reverse is a manuscript "10c" to indicate double the deficiency in French centimes as well as a Penang postage due mark "4" indicating that postage due of 4 cents was payable. Finally there is a Kuala Lumpur arrival mark of 15 FE 1910.



# MALAYA - STRAITS SETTLEMENTS - SELANGOR

## Singapore and Selangor

June 1911

Indian KEVII internal rate of ½ Anna Postal Stationary envelope to Kuala Lumpur, Selangor, Malaya.  
The rate was 1 Anna and the deficiency ½ Anna.

On the obverse is an Indian "T" (Tax) marking and a blue manuscript "10c" to denote double the deficiency in French centimes. On the reverse there is a Penang transit marking of 26 JU 1911 as well as a Kuala Lumpur arrival marking of 27 JU 1911. There is also a "4" Penang postage due mark to indicate a charge of 4 cents.



# MALAYA - STRAITS SETTLEMENTS - SELANGOR

Selangor via Penang

January 1912

Unpaid letter from Kilanilai, Pudukotah, India to Kuala Lumpur, Selangor, Malaya postmarked 17 JA 12 on the reverse. The rate, and the deficiency, was 1 Anna.

On the obverse is part of an Indian "T" (Tax) marking in a circle. On the reverse there is a Penang transit mark of 26 JA 1912 and a Kuala Lumpur arrival mark of 29 JA 1912. The Penang postage due mark of "8" also on the reverse indicates that postage due of 8 cents was charged.



சென்னைக்கு கீழ்க்கண்ட  
பி. க. சிவசுந்தரன்  
கே. சி. சிவசுந்தரன்  
கே. சி. சிவசுந்தரன்  
பி. க. சிவசுந்தரன்  
கே. சி. சிவசுந்தரன்  
P. M. N. Adhikaran  
Kuala Lumpur

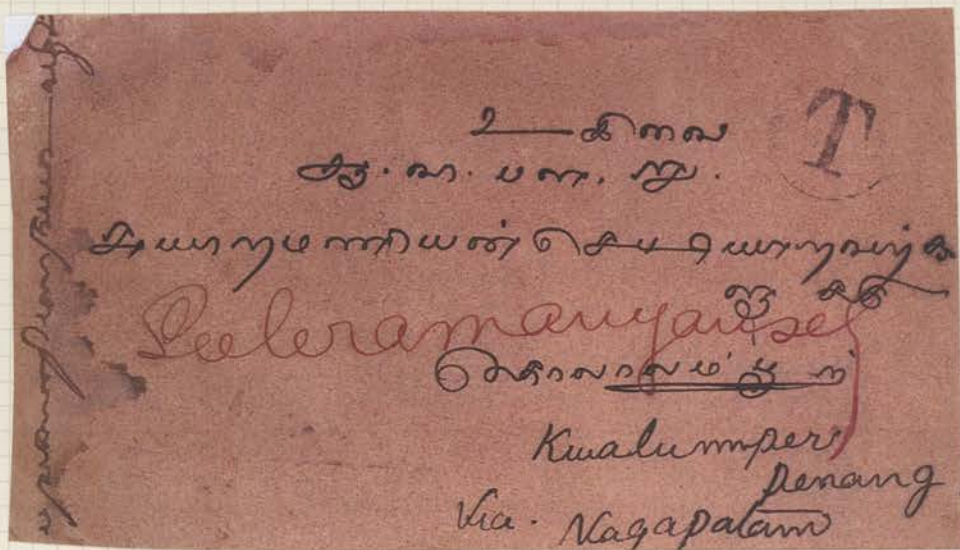
# MALAYA - STRAITS SETTLEMENTS - SELANGOR

Selangor via Penang

March 1912

Unpaid letter from Karaikudi, India to Kuala Lumpur, Selangor, Malaya postmarked 7 MAR 12 on the reverse. The rate, and the deficiency, was 1 Anna.

On the obverse there is an Indian "T" (Taxe) mark. On the reverse there is a Penang transit mark of 14 MR 1912 and a Kuala Lumpur arrival mark of 17 MR 1912. The Penang postage due mark of "8" on the reverse indicates that postage due of 8 cents was charged.



# MALAYA - PERAK - STRAITS SETTLEMENTS

Perak via Penang

April 1912

Unpaid letter from Tirupatur, Ramnad, India to Ipoh, Perak, Malaya postmarked 1 AP 12 on the reverse. The rate, and the deficiency, was 1 Anna.

On the obverse is a faint Indian "T" (Taxe) marking in a circle. There are transit marks of Penang of 11 AP 1912 and Taiping of 12 AP 1912 on the reverse and an Ipoh arrival mark of 13 AP 1912.

There is also a Penang postage due marking "8" on the reverse indicating that postage due of 8 cents was charged.





# MALAYA - PERAK - STRAITS SETTLEMENTS

Perak via Penang

November/December 1912

Unpaid letter from Sirukudappatti, India to Ipoh, Perak, Malaya postmarked 30 NOV 12 on the reverse.  
The rate, and the deficiency, was 1 Anna.

On the obverse are Indian "T" (Taxe) in a circle and a horseshoe "Sirukudappatti/ Due/ AS" marks. On the reverse there are a transit mark of Penang of 13 DE 1912 and a Penang postage due mark of "8" indicating that postage due of 8 cents was charged. There is also an Ipoh arrival mark of 13 DE 1912.

