

# MALAYA - FEDERATED MALAY STATES

Perak

February 1924

Unpaid letter from Bruas to Taiping, Perak, Malaya postmarked 2 February 1924. The rate and the deficiency was 5 cents.

There is a Bruas "b/T/r/ cts" postage due mark and a blue crayon "10 cts" to denote the postage due to be collected. On the reverse there is a Taiping arrival mark of 4 February 1924.



# MALAYA - FEDERATED MALAY STATES

Perak to Selangor

April 1924

Improperly paid letter from Bidor, Perak to Kuala Lumpur, Selangor, Malaya postmarked 26 April 1924. Payment was attempted by a copy of the 1921 Straits Settlements 5 cents which was invalid in the FMS.

The rate and the deficiency was thus 5 cents.

As the stamp was invalid there is a manuscript "**Cancelled in Error**" next to the postmarked stamp. There is also a unique circular "**B/ T/ D/ cts**" and a large blue manuscript "**10**" to denote the postage due. On arrival a boxed "**Kuala Lumpur/ 10 cts./ To pay**" was applied. On the reverse there is a transit mark of Tapah Road of 26 April 1924.



# FEDERATED MALAY STATES

Perak

May/ June 1924

Underpaid PSE (local rate of 1 Anna) from India to Ipoh, Perak, Malaya postmarked 20 May.24.

The rate was 2 Annas and the deficiency 1 Anna.

On the obverse there is an Indian "T" (Taxe) mark and a "20.C" to indicate double the deficiency in gold centimes. On the reverse there is an Ipoh arrival mark of 13 JU 1924 and a boxed "Ipoh/ 8 cts/ To Pay" mark to indicate the postage due collected.



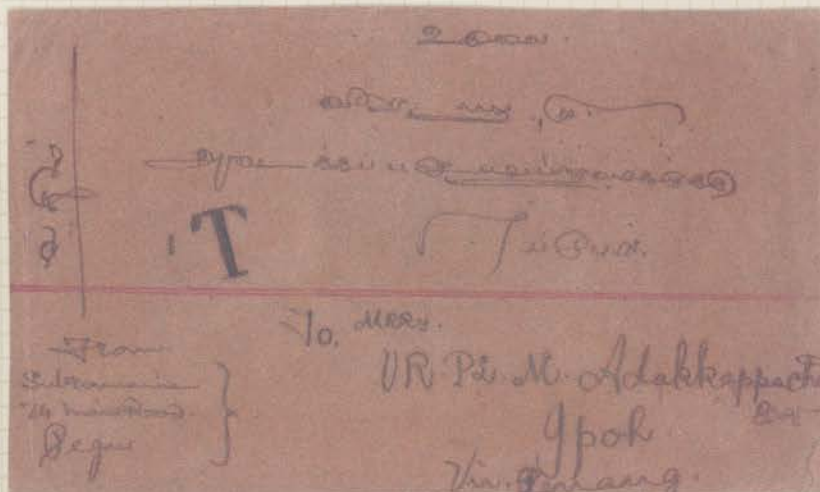
# MALAYA - FEDERATED MALAY STATES

Perak

August/September 1924

Underpaid letter from Pegu, India to Ipoh, Perak, Malaya postmarked 29 AUG 24 and partly paid by copies of the ½ Anna of 1912 and 1 Anna of 1922 on the reverse. The rate was 2 Annas and the deficiency ½ Anna.

On the obverse is an Indian "T" (Taxe) mark. On the reverse there is a Taiping transit mark of 8 SE 1924 and a "Taiping/ 8 Cts/ To Pay" mark to indicate the postage due to be charged. There is an arrival mark of Ipoh of 9 SE 1924.



# MALAYA - FEDERATED MALAY STATES

Perak

October 1924

Unpaid letter from Ramaravathipur, India to Ipoh, Perak, Malaya postmarked 18 OCT 24 on the reverse. The rate, and the deficiency, was 2 Annas.

On the obverse are Indian "T" (Taxe) and "40c" marks to indicate double the deficiency in gold centimes.

On the reverse there is an Ipoh arrival mark of 31 OC 1924 and a boxed "Ipoh/ 10 Cts./ To pay" mark indicating that postage due of 10 cents was charged.

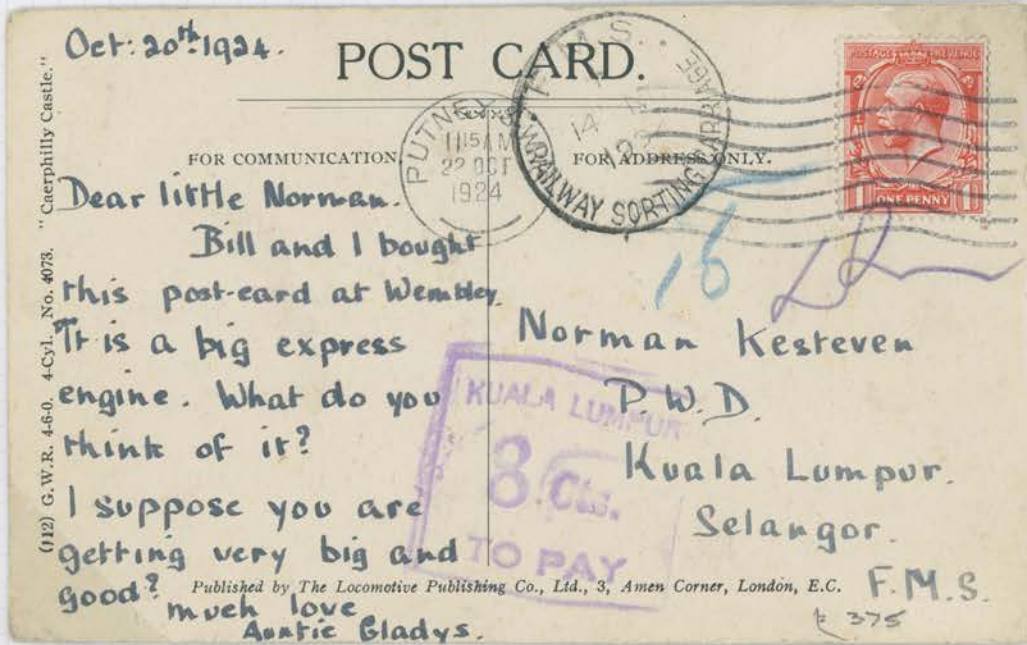


# MALAYA - FEDERATED MALAY STATES

Selangor

October/November 1924

Underpaid PPC (*GWR Express Engine*) from Putney, London postmarked 22 October 1924 on a copy of the 1d of 1924 to Kuala Lumpur, Selangor, Malaya. The rate was 1½d and the deficiency ½d. There is a blue manuscript "15" and an F.M.S./ Railway Sorting Carriage mark of 14 November 1924. There is a boxed "Kuala Lumpur/ 8 cents/ To Pay" postage due mark to indicate the amount due and collected on arrival.



## MALAYA - FEDERATED MALAY STATES

Perak

November 1924

Underpaid letter from India to Kampar, Perak, Malaya with postage partly paid by a one Anna of 1926 postmarked 8 Nov 24 on the reverse. The rate was 2 Annas and the deficiency one Anna. On the obverse are Indian "T" (Tax) and "20C" marks to indicate double the deficiency in gold centimes. On the reverse there are an Ipoh transit mark of 24 NO 1924 and a boxed "Ipoh/ 8 Cts/ To pay" mark and a Kampar arrival mark of 25 NO 1924.



# MALAYA - FEDERATED MALAY STATES

Perak

November 1924

Underpaid letter from Devakottai, India to Kampar, Perak, Malaya with postage partly paid by a one Anna of 1926 postmarked 17 Nov 24 on the reverse. The rate was 2 Annas and the deficiency one Anna. On the obverse are Indian "T" (Tax) and "20C" marks to indicate double the deficiency in gold centimes. On the reverse there are an Ipoh transit mark of 28 NO 1924, a boxed "Ipoh/ 8 Cts/ To pay" mark and a Kampar arrival mark of 29 NO 1924.

